

# Barbie<sup>®</sup> AND Ken<sup>®</sup> He's a doll!<sup>™</sup>

Teen-Age Fashion Model

Barbie's Boyfriend<sup>™</sup>



and Barbie's Best Friend<sup>™</sup>

# Midge<sup>™</sup>



**Barbie**®

**BASIC BARBIE DOLL  
FASHION MODEL SET**

**#850**

Your Barbie doll is created of sturdy flesh-tone vinyl plastic. Moveable arms, legs and head make it easy to dress Barbie in her exciting fashion model's wardrobe. Barbie Doll, plus jersey swimsuit, pearl earrings and shoes... and special wire stand to keep Barbie on her feet for all Fashion Shows. \$3.00

**NOTE:** When dressing Barbie, do it the way real fashion models dress: slip her dress or skirt up over her feet and hips.

PRICES SHOWN ARE APPROXIMATE, AND MAY BE LESS IN SOME LOCATIONS.

# NEW!



## Midge™

Barbie's Best Friend™

Midge, the "girl next door," now available. Midge finds Barbie's lovely clothes a perfect fit, too.

Sturdy, flesh-tone vinyl plastic and polyethylene with movable arms, legs and head. You can have Midge as a blonde, brunette or redhead!

Midge doll comes dressed in a gay, two-piece jersey swim-suit, smart high-heeled shoes, and special wire stand, \$3.00

#860

**NOTE:** When dressing Midge, do it the way real fashion models dress: slip her dress or skirt up over her feet and hips.





## MOOD FOR MUSIC

(without doll)

# 940

Regal powder blue velvet hostess capris, matching cardigan with soft white angora collar. White knit dickey blouse, pearl choker and gold wedgies add finishing touch.

\$3.00

# 940



## THEATRE DATE

(without doll) # 959

Emerald green satin theatre or dinner suit, white satin blouse. Skirt has peplum, blouse has low-cut back for after-theatre dancing. Matching green shoes and hat.

# 959 \$2.25

## "SWEET DREAMS"

(without doll)

#973



Novelty tricot Baby Doll gown and panties trimmed with embroidery and satin bows. Hair bow to match. Pastel bedroom scuffs. Plus Barbie's "Dear Diary" book, her apple-a-day, and alarm clock to wake her in the morn! Complete set, \$1.25

#973

## FLORAL PETTICOAT

(without doll) #921

Crisp nylon sheer petticoat, all-over embroidered with pastel floral design and matching panties. Strapless bra, vanity mirror, comb, brush set. Complete.

\$ 1.25



#921

MINIATURE TOILET

## NIGHTY NEGLIGEE

(without doll) #965  
Luxurious full-length  
tricot gown. Grecian  
bodice with  
embroidered flower.  
Matching peignoir  
of finely  
tucked  
tricot with  
embroidered  
pocket.  
Toy stuffed  
dog for  
Barbie's  
bed. The  
set, \$3.00



#965

## SORORITY MEETING

(without doll) #937  
Versatile cocoa brown  
sheath smartly topped  
by matching sleeveless  
cardigan with white  
trim. Pillbox hat,  
brown heels, pearl  
necklace and earrings  
as accessories. \$2.50

#937





## BARBIE® BABY-SITS!

(without doll) #953

Dressed in pretty apron, Barbie baby-sits! To while away the hours, she has her school books (with strap) to study; a clock, her glasses, a phone and phone book, a bottle of pop and box of pretzels. Her tiny "charge" is a soft vinyl baby doll, dressed in diaper (extra diaper included!) complete with sacque, bassinette with lining, blanket and pillow, and nursing bottle.

The set, \$2.75.

#953





## MOVIE DATE

(without doll) #933  
Blue and white striped  
summer cotton  
with frothy organdy  
overskirt. Bows  
accent bodice and  
hemline. \$1.50

#933

## MAS- QUERADE

(without  
doll) #944

Pierrette  
costume for  
Barbie to go  
with Ken's  
Pierrot. Yellow  
and black  
short costume  
with glitter-net  
ruching,  
matching  
clown hat,  
black nylon  
tights, black  
mask, black  
shoes with  
yellow pom-poms.  
Invitation included,  
too! \$2.00



#944



## TENNIS, ANYONE

(without doll) #941  
Jaunty, white tennis dress with fitted bodice, pleated skirt topped with tennis sweater trimmed in orange. Includes tennis shoes, socks, goggles, rule book, racquet and two balls. \$3.00

#941



## FANCY FREE

(without doll) #943  
Dashing red and blue casual dress, trimmed with white ric rac. Full skirt has two large pockets. The set, \$1.50

#943



## SKI QUEEN

#948

(without doll)

Smart ski outfit

includes hooded parka with Tyrolean-type trim and zipper closing; blue jersey ski pants, mittens, ski boots, skis and ski poles, dark glasses.

The complete ensemble, \$3.25

#948



## PARTY DATE

(without doll) #958  
 Strapless, low-back dress of white and gold glitter satin. Wide golden belt, matching gold purse and shoes with gold trim. The set, \$1.50

#958



## KNITTING PRETTY

(without doll) #957  
 Royal blue sleeveless turtleneck sweater with twin cardigan. Matching flannel skirt. Knitting needles, yarns, scissors in a bowl. Barbie's own knitting book. Shoes. The set, \$3.00

#957



## BUSY MORNING

(without doll) #956  
 Red and white cotton  
 suntop dress.  
 Cartwheel straw hat,  
 red ribbons. Fruit-filled  
 tote-bag. Necklace, white  
 pumps. White telephone, too!  
 The set, \$2.50

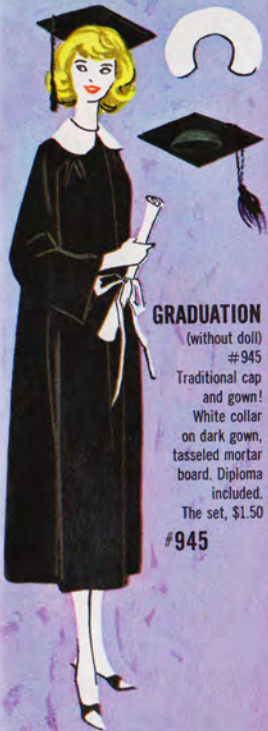
#956



## ICEBREAKER

(without doll) #942  
 Red velveteen skating  
 skirt topped with  
 furry, white jacket.  
 Red knit leotard with  
 turtleneck and long  
 sleeves, long stockings  
 and skates complete  
 the set. \$3.00

#942



## GRADUATION

(without doll)

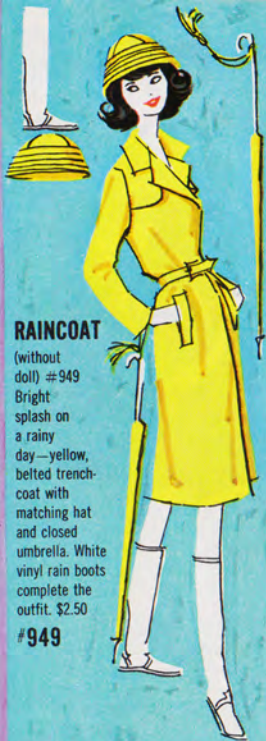
#945

Traditional cap  
and gown!

White collar  
on dark gown,  
tasseled mortar  
board. Diploma  
included.

The set, \$1.50

#945



## RAINCOAT

(without  
doll) #949

Bright  
splash on  
a rainy  
day—yellow,  
belted trench-  
coat with  
matching hat  
and closed  
umbrella. White  
vinyl rain boots  
complete the  
outfit. \$2.50

#949



#934

## AFTER FIVE

(without doll) #934  
 Princess-style dress of black faille with portrait collar of white organdy, button accent on bodice. Organdy picture hat with black velvet bow and black shoes complete the set. \$2.00



## CAREER GIRL

(without doll) #954  
 Classic two-piece black tweed suit, with red sleeveless pullover. Hat matches suit, sparkled with red rose. Black elbow length gloves and black pumps. The set, \$3.00

#954

## ENCHANTED EVENING

(without doll) #983

Formal, floor-length gown with flowing train, in the elegance of pink satin.

Simulated pearl necklace and drop earrings. Pink dancing pumps with silver glitter. White tricot elbow gloves. White fur stole.

Complete set, \$4.00



#983

## WINTER HOLIDAY

(without doll) #975  
Swaggering car-coat of "leather" over a striped cotton t-shirt with jaunty hood. Both shirt and ankle-boner pants have zipper closings. Plaid zipper bag, shoes, knit mittens. The set, \$3.50.



#975

## SENIOR PROM

(without doll) #951  
Stunning ice blue and sea green satin and tulle formal gown for the Senior Prom! Green satin bodice with blue trim, green and blue variegated tulle overskirt. Matching green dancing shoes. The set, \$3.00.



#951



#870

Super-sophisticated Barbie with new sculptured head and three high-fashion wigs (plus wig stand). Change her coiffure to go with different ensembles. You have a choice of platinum bubble-on-a-bubble, brunette page-boy, or titian side-part flip. Fashion Queen Barbie is dressed in a stunning gold striped lamé swim suit, with matching head scarf. High-heeled shoes; pearl earrings. \$6.00

**NOTE:** When dressing Fashion Queen Barbie, do it the way real fashion models dress: slip her dress or skirt up over her feet and hips.



The new

“FASHION QUEEN”<sup>T.M.</sup>

Barbie®

## DINNER AT EIGHT

(without doll) #946

Stunning hostess pajama set.

One-piece persimmon

slack-and-bodice lounging suit,

with gold metallic net hostess

coat. Gold wedgies.

The set, \$2.50

#946





#984

## AMERICAN AIRLINES STEWARDESS

(without doll) #984  
 Barbie takes off for sky adventures in her flight blue uniform with flight insignia on cap and jacket. Her white nylon blouse and shoulder pocketbook are trimly tailored to regulations. An American Airlines flight bag travels with her. The set, \$3.50



## RED FLARE

(without doll) #939  
 Luscious red velvet ensemble. Flared coat with bell sleeves and white satin lining. Matching pillbox hat, handbag; long, white gloves and red shoes. \$3.00

#939



#991

## REGISTERED NURSE

(without doll) #991 Barbie cures patients in a trim white cotton uniform with zipper back, buttoned blouse and real hip pockets. With her spectacles and graduate nurse's cap, she wears a navy blue cape lined in red silk for outside calls. Hot water bottle, diploma, medicine bottle and spoon complete the set. \$3.00



## SWINGIN' EASY

(without doll) #955 Feminine green print party dress. Full skirt, wide cummerbund and sash. Accessorized by pearl on gold chain necklace, black pumps, white purse. The set, \$2.00

#955

## BRIDE'S DREAM

(without doll) #947

Lovely wedding gown, fashioned for a fairy princess. Traditional white satin gown with a drift of nylon chiffon overskirt and ruffles cascading down the front panel from the tiny waist. Tiny mock pearl tiara holds tulle bridal veil. Long white gloves, single strand pearl necklace, sentimental blue garter, bridal bouquet and white slippers. The set, \$3.50

#947





#986

## SHEATH SENSATION®

(without doll)

#986—Fashion's slim sheath in fireman red cotton has 4 gold buttons and 2 deep pockets. Crisp white straw hat, gloves and white shoes make dazzling accessories. The set. \$1.50



## GOLDEN ELEGANCE

(without doll)

#992

Glamorous ensemble of gold and red lame.

Coat has fur cuffs, is completely lined with red satin. Strapless sheath of same exciting lame.

Velvet bag, short white gloves, hankie, pearl necklace and earrings, and fur headband accessorize the ensemble. \$4.00

#992

## SOPHISTICATED LADY

(without doll) #993

Romantic old rose taffeta ball gown with silver filigree lace trim on bodice and drape of skirt. Silver tiara, long white gloves, pink pearls and evening slippers. Fitted American Beauty Rose velveteen evening coat, lined to match gown, has dainty silver buttons. The ensemble, \$5.00

#993



## SOLO IN THE SPOTLIGHT

(without doll)

#982

Dramatic black glitter-gown with bare shoulders and rose corsage on nylon net flounce. Long black nylon tricot gloves. Pink scarf and bead necklace. Black plastic pumps. Plastic microphone. The set, \$3.00

#982



## ORANGE BLOSSOM®

#987

(without doll) #987

Barbie blossoms out for a wedding or graduation party in a buttercup yellow sheath frosted with an embroidered sheer nylon overskirt. Veiled tulle hat, white shoes and a bouquet of spring posies complete the pretty picture. The set, \$2.50





## BALLERINA

(without doll) #989

Barbie dances before kings and queens as the Sugar Plum Fairy, costumed in a shimmering silver tutu. A program announces her performance. For practice at the barre, she wears a black jersey leotard and tights. Pink satin shoe bag holds her ballet slippers. The set, \$3.00



## FRIDAY NITE DATE

(without doll) = 979  
 Powder blue corduroy jumper with colorful felt appliques. White blouse and bouffant petticoat. Black plastic shoes. Two plastic coke tumblers with serving tray and drinking straws. The set, \$2.50

#979



## GARDEN PARTY

(without doll) = 931  
 Cotton candy look in pink rosebuds and ruffles. White eyelet insert on skirt front. Dainty pink bow at waist. Includes white gloves and shoes. \$2.00

#931

# Barbie's<sup>®</sup> Dream House

*Here's where Barbie lives!*



**\$8.00**

*(Slightly higher west  
of the Rockies)*

Her house comes with a convenient carrying handle, includes a complete suite of easy-to-assemble, modern, slim-line furniture and all the special living accessories Barbie has chosen for her home. Folds away neatly and compactly when not in use. **#816**



*(Doll and clothing not included)*



© 1961 by Mattel Inc.

the *Barbie*<sup>®</sup> game  
QUEEN OF THE PROM

Be sure to play this exciting game  
of teen-age girl activities!

Available Now — \$4.00

# Barbie<sup>®</sup> AND Midge<sup>™</sup>

## MIX 'N MATCH FASHION PAKS

Color coordinated separates for Barbie and Midge! Designed for you to create versatile style combinations for any occasion. Each Fashion Pak includes individual hanger for costumes.





KNIT SHORTS  
AND TOP 1.00



KNIT BLOUSE .80



KNIT FULL EVENING SKIRT  
1.00



KNIT  
SLACKS  
.80



KNIT SHEATH  
DRESS WITH  
FRINGED COLLAR  
1.20



KNIT SHEATH  
SKIRT AND  
SASH .80

EACH KNIT ITEM COMES IN MULTI-COLOR STRIPE, AND BLUE, AND YELLOW.



GATHERED SKIRT .80

COMES IN BLACK & WHITE  
PRINT, OR 4 SOLID COLORS

COMES  
IN 3  
COLORS



TEE-SHIRT / SHORTS

.80

JEANS  
1.00



PJ'S 2-PIECE 1.20

COMES IN 3 COLORS

COMES IN  
BLACK & WHITE  
PRINT OR 4  
SOLID COLORS



SCOOP NECK  
PLAYSUIT 1.00



ACCESSORY PAK 1.00



SINGING IN THE SHOWER\* 1.40



SQUARE  
NECK  
SWEATER  
.80

COMES IN 3 COLORS



PLAIN BLOUSE .80

COMES IN BLACK & WHITE PRINT, OR 4 SOLID COLORS



COMES IN 3 COLORS  
JERSEY SWIMSUIT 1.00

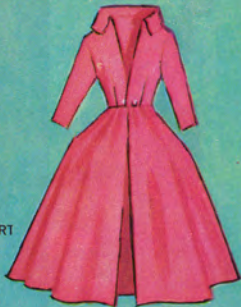




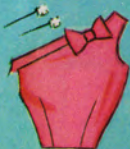
SATIN SLACKS .80



SATIN SHEATH SKIRT  
.80



SATIN COAT 1.40



SATIN EVENING TOP .80



SATIN BOLERO 1.00



FULL SATIN EVENING SKIRT  
1.00

EACH SATIN ITEM SHOWN COMES IN BLACK, WHITE, ROSE AND PINK GLITTER.



SHEATH  
WITH GOLD  
BUTTONS  
1.00

COMES IN 3 COLORS



SLACKS .80  
COMES IN BLACK  
& WHITE PRINT,  
OR 4 SOLID COLORS



GOLD LAME  
SHEATH 1.40



PURSE  
PACK  
.80



FUR STOLE WITH BAG 1.20



PEACHY  
FLEECE  
COAT 1.40



LINGERIE PAK 1.00  
COMES IN 4 COLORS

COMES IN  
PRINT OR 4  
SOLID COLORS



SHEATH SKIRT WITH  
TELEPHONE .80



CARDIGAN  
(ANGORA COLLAR) 1.20

COMES  
IN 3  
COLORS



FUR HAT/BAG 1.00



APRON AND UTENSILS 1.00  
COMES IN 3 COLORS



COMES  
IN 4  
COLORS

SILK SHEATH 1.00



SHOE PAK 1.00



EMBROIDERED SET (LINGERIE) 1.00



STRAW HAT,  
PURSE, SHOES 1.00



COMES IN 3 COLORS.  
BELL DRESS 1.20

"FASHION QUEEN"<sup>T.M.</sup> Barbie® & Ken®  
TROUSSEAU SET

#864



All the romance of a big formal wedding and a dream honeymoon! Fashion Queen Barbie with her 3 high fashion wigs and wig stand, plus a bridal outfit fit for a fairy princess—wedding gown, veil, bouquet, long gloves, pale blue garter, blue panties and bra, white shoes. Trousseau includes red playsuit with yellow belt, black and white print gathered skirt, striped sun dress, dressy orange bell dress, necklace, white purse, blue purse, blue shoes, white cardigan and sunglasses. Ken's the handsome groom with tuxedo, white shirt, black shoes and socks; dressy gray suit, jockey shorts, gold Bermuda shorts, sport shirt, brown and white shoes, green knee socks, red socks, red tie. \$25.00

New

Barbie's<sup>®</sup>

FASHION SHOP<sup>T.M.</sup>



#817

An elegant fashion shop where Barbie can model her lovely clothes! Attractive exterior with showcase window. Interior includes small stage where Barbie can model fashions; dressing room; display alcove for frocks and counters for accessories and jewelry; and smart salon furniture for "customers." Shop comes with convenient carrying handle, is easy to assemble.

\$7.50



(Dolls and clothing not included.)

BARBIE'S BOYFRIEND<sup>T.M.</sup>

**Ken**<sup>®</sup>

He's a doll<sup>T.M.</sup>

**#750 BASIC KEN DOLL SET**

Tall, crew-cut Ken makes a handsome steady for your Barbie doll. Sturdy, flesh-tone vinyl plastic with moveable arms, legs and head, Ken is easy and fun to dress in his smartly-tailored wardrobe. Ken Doll, plus bathing trunks, beach jacket, sandals, and a special wire stand to hold him upright. \$3.50

**#750**





## SPORTS SHORTS

(without doll) #783

Ken's been invited to Barbie's backyard barbecue. He's ready for a big helping of fun in a sport shirt and contrasting Bermuda shorts. His khaki socks and brown oxfords round off a really neat casual wardrobe. The set \$2.00

#783



## CAMPUS HERO

(without doll)

#770

Campus leader Ken proudly wears the handsome sweater Barbie knit for him, adds white duck pants, red socks and white oxfords. Taking Barbie to the big pre-game rally and dance, he shows his University letter, leads the crowd's cheers with his banner. The set, \$3.00

#770



## CASUALS

(without doll) #782  
When Ken takes the keys to his sports car, Barbie is navigator on the Open Road. Behind the wheel he wears a red sports cap, knit tee shirt and polished cotton pants.



Barbie selected the argyle socks he wears with two-tone shoes. The set, \$2.00

#782



## FUN ON ICE

(without doll) #791  
Ken takes Barbie ice skating in handsome blue and gold argyle sweater, gold corduroy trousers, matching stocking cap, muffler and mittens. Pak includes shoe racing skates. Set, \$3.00

#791



## ARMY AND AIR FORCE

(without doll)  
#797

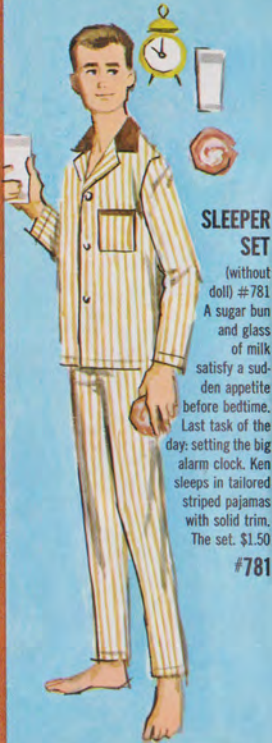
Armed forces uniform with interchangeable accessories so that

Ken can be a member of the U. S. Army or of the U. S. Air Force. Basic

summer uniform, with Army

overseas cap, tie, belt, brown shoes and socks. Also Air Force wings, blue cap and tie, belt, black shoes and socks. The set, \$3.00

#797



## SLEEPER SET

(without doll) #781

A sugar bun and glass of milk satisfy a sudden

appetite before bedtime.

Last task of the day: setting the big

alarm clock. Ken sleeps in tailored

striped pajamas with solid trim.

The set. \$1.50

#781



#792

### PLAY BALL!

(without doll) #792  
 Ken plays on the varsity team in a 2-piece baseball uniform, regulation shoes and socks, and plastic batting cap. Set includes bat, ball and mitt. \$2.50



### TOUCHDOWN!

(without doll) #799  
 Ken's the campus football hero in his bright red padded football trousers and sweat shirt with authentic red plastic shoulder guards. Matching plastic football helmet, socks and regulation shoes. Football included. \$3.00

#799



## TERRY TOGS

(without doll) #784  
A shower and shave start the morning. Ken is dressed in a thick, thirsty terry robe embroidered "K," with matching scuffs. He has soap, sponge and a man-size terry towel. Dressed in knit briefs, he uses his electric shaver and comb. The set, \$2.00

#784



## TIME FOR TENNIS

(without doll) #790  
Official-looking white tennis cardigan with red and blue trim tops white sport shorts and T-shirt. Includes tennis shoes, socks, goggles, racquet and ball. \$3.00

#790



## SKI CHAMPION

(without doll) #798

Ski outfit includes fully-lined red quilted jacket, knitted ski pants with matching stocking cap and mittens, ski boots, skis, ski poles and sun glasses. The set, \$3.50

#798



## SATURDAY DATE

(without doll) #786

For business appointments in town, or Saturday night dress-up dates with Barbie, Ken chooses a smart natural-shoulder suit and long-sleeved white shirt. Fashionable slim tie in Ivy-stripes, shoes and socks complete the outfit. The set, \$4.00

#786

## TUXEDO

(without doll) = 787

Ken is set for an Enchanted Evening in his tuxedo with satin-faced lapels, white dress shirt, black socks and shoes. He wears a dashing maroon bow tie and cummerbund, carries a dewy white corsage for Barbie to pin on her gown. The set, \$5.00



#787



#785

## DREAMBOAT

(without doll)

= 785

Ken chooses ivy colors for a Sunday drive in the country with Barbie. His sports jacket, open-collared shirt and tailored slacks are perfect for a lunch-stop in a pretty village.

Matching socks, black oxfords, and a snap-brim straw hat add to Ken's good looks. The set, \$4.00





Costume  
 on  
 Party!



## MASQUERADE

(without doll) = 794

Ken wears his Pierrot costume to match up with Barbie's Pierrette. Yellow and black costume complete with mask, scull cap, clown hat, shoes and invitation to the party! The set, \$2.00 #794

## SAILOR

(without doll) = 796

It's anchors aweigh for Ken in an authentic U.S. sailor uniform. Set includes midy (with rank on sleeve) and tie, bell bottom trousers, gob cap, duffle bag and black shoes and socks. \$3.00

#796





## THE YACHTSMAN

(without doll) # 789  
Denim sailing outfit includes slacks and jacket, plus red and white striped T-shirt, black shoes, white socks. Set, including Yachtsman book. \$3.00

# 789

## RALLY DAY

(without doll) # 788  
Tailored beige poplin all-weather coat with bright red hat. Also included are map and car keys. (Slacks and shoes not included). \$2.00



# 788





### Dr. KEN

(without doll)  
#793

"Dr. Ken" treats his patients in his doctor's top and trousers, white shoes and socks.

Pak includes surgeon's mask and cap, doctor's black bag, stethoscope and reflector head band. \$3.00

#793



### GRADUATION

(without doll)  
#795

Ken receives his diploma (included in pak) wearing traditional black gown, and mortar board. The set, \$1.50

#795

# Barbie®

has her own

## FAN CLUB

and her own **MAGAZINE**

... with news about Barbie, her club,  
her fashions and her friends.



Many Barbie doll owners have written to us with so many ideas for having fun with Barbie that we've organized a national Barbie Fan Club. Membership is free, and all Barbie fans can join!

- Join the national Barbie Fan Club
- Start your own local chapter
- Exchange ideas with other clubs all over the country
- Enter the club contests
- Subscribe to the wonderful Barbie Magazine

---

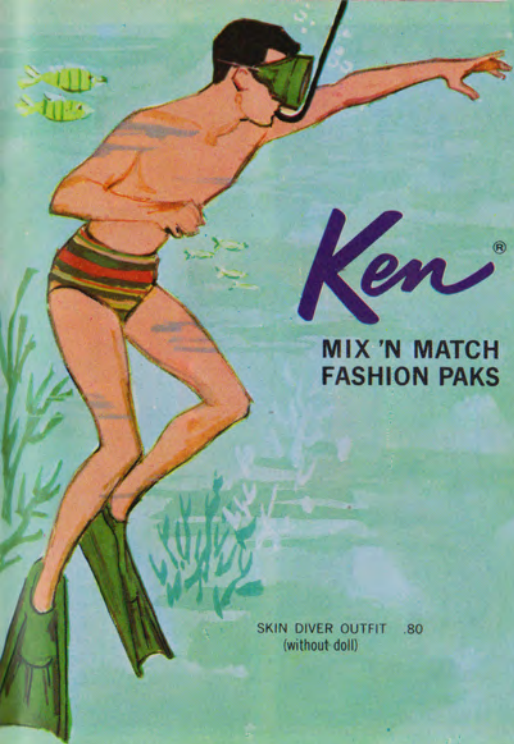
**BARBIE®** P. O. BOX 44, LOS ANGELES 51, CALIF.

- Please enroll me as a member, without charge, in the Barbie Fan Club.
- Please enroll me as a member in the Barbie Fan Club and enter my subscription to the Barbie Magazine. I enclose one dollar (check or money order) for six issues, once every other month.

NAME \_\_\_\_\_ AGE \_\_\_\_\_  
*(please print plainly)*

BIRTHDAY \_\_\_\_\_ ADDRESS \_\_\_\_\_

CITY \_\_\_\_\_ ZONE \_\_\_\_\_ STATE \_\_\_\_\_



**Ken**®

**MIX 'N MATCH  
FASHION PAKS**

SKIN DIVER OUTFIT .80  
(without doll)



GREEN  
OR  
BEIGE

CORDUROY JACKET 1.40



WHITE DRESS SHIRT 1.00

COMES IN 2 COLORS



SPORT SHIRT SOLID  
COLOR 1.00



BLUE BLAZER 1.40



COMES  
IN 3  
COLORS

POLO SHIRT .80



BEIGE WINDBREAKER 1.40



GREEN OR RED PRINT

PATTERN PRINT SHIRT 1.00



HUNTING OUTFIT 1.40



BOXING OUTFIT 1.00



JEANS 1.00



SWEATSHIRT 1.20



PULLOVER SWEATER 1.00



BROWN SLACKS  
1.00



CORD SLACKS  
1.00



GREY SLACKS  
1.00



ACCESSORY  
PAK 1.00



RED VEST .80



CARDIGAN SWEATER 1.20

## FASHION PATTERNS

# Barbie®, Ken® & Midge™

by Advance Pattern Company

It's easy! It's fun! Sew your own fashions for Barbie, Midge and Ken with specially designed patterns. Easy-to-follow instructions and patterns.

24 designs for Barbie and Midge

6 designs for Ken

Pattern designs are completely different from the designs available in the Mattel Ensemble Paks or Fashion Paks.



YOU CAN TELL  
IT'S **MATTEL**®...  
IT'S SWELL!

GENUINE *Barbie*®  
BY MATTEL®

GENUINE  
FASHION  
QUEEN... *Barbie*®  
BY MATTEL®

GENUINE *Midge*™  
BY MATTEL®

GENUINE *Ken*®  
BY MATTEL®

**DON'T  
ACCEPT  
IMITATIONS!**

Look for the Mattel identifying wrist tag attached to each Genuine Barbie, Midge, and Ken Doll. For perfect fit and finest quality, always insist on the genuine Barbie, Midge, and Ken fashions, made only by Mattel.

ALL COSTUMES ILLUSTRATED ARE ORIGINAL DESIGNS BY MATTEL®

0850-1150

Printed in Japan