

Barbie® and Ken™

HE'S
A DOLL!

TEEN-AGE FASHION MODEL

BARBIE'S BOYFRIEND



© 1961 by Mattel Inc.



BASIC BARBIE DOLL FASHION MODEL SET

Your Barbie doll is created of sturdy, flesh-tone vinyl plastic. Moveable arms, legs and head make it easy to dress Barbie in her exciting fashion model's wardrobe. Barbie Doll, plus striped jersey swimsuit, sun glasses, hoop earrings and shoes...and special pedestal to keep Barbie on her feet for all Fashion Shows, \$ 3.00.

FLORAL PETTICOAT

(without doll) #921

Crisp nylon sheer
petticoat, all-over
embroidered with
pastel floral design
and matching
panties. Strapless
bra, vanity mirror
comb, brush set.
Complete,

\$ 1.25.



#921



FASHION UNDERGARMENTS

(without doll) #919

Tricot half-slip has
fluted flounce to
match panties.

Embroidered tricot
girdle and strapless
bra. The set,

\$ 1.00.



#919

#973

"SWEET DREAMS"

(without doll) #973
Novelty tricotee Baby
Doll gown and panties
trimmed with
embroidery and satin
bows. Hair bow to
match. Pastel
bedroom slippers. Plus
Barbie's "Dear Diary"
book, her apple-a-day,
and alarm clock to
wake her in the morn!
Complete set, \$1.25.



NIGHTY-NEGLIGEE SET

(without doll) #965
Luxurious full-length
tricot gown, Grecian
bodice with
embroidered flower.
Matching peignoir of
finely tucked tricot
with embroidered
pocket. Toy stuffed
dog for Barbie's bed!
The set, \$ 3.00.



#965





#988



SINGING IN THE SHOWER

(without doll) #988

Barbie's Bath Pack wraps her in a real terrycloth robe, monogrammed "B" for Barbie. To make a splash in the shower, there's a towel, washcloth, soap, sponge and shower cap. For after-bath luxury: talc and a fluffy puff. The set, \$ 2.00

BARBIE-Q OUTFIT

(without doll) #962
Cotton sunback dress
with Chef hat and apron.
Barbecue cooking
utensils and potholder.
Summer shoes. The
set, \$ 2.00.

#962



#923

BARBIE ACCESSORIES

(without doll) #923—Coral bathing suit, sunglasses, 3 pairs of open-toe shoes. The pearl necklace, bracelet, gold hoop earrings, white gloves and flower-trimmed straw handbag accessorize the sheath dress you can sew from the pattern printed on the package. The set, \$1.50



OPEN ROAD

(without doll) # 985—

Barbie takes the high fashion road with beige sweater, striped pants, and a car coat fastened with toggles. Her straw hat ties with a red scarf, wedges and real toggles match. A map shows the way to fun. The set, \$3.50

#985





#979

FRIDAY NITE DATE

(without doll) #979
Powder blue corduroy
jumper with colorful felt
appliques. White blouse
and bouffant pettiskirt. Black
plastic shoes. Two plastic
coke tumblers with serving
tray and drinking straws.
The set, \$2.50



BUSY GAL

(without doll) #981

Two-piece red linen suit
with striped jacket lining.

Red-and-white striped
cotton sun-back blouse.

Open-crown hat, to match
blue belt and shoes.

Glasses. Two fashion drawings
inside artist's portfolio.

The set, \$2.50



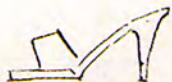
#981



COTTON CASUAL

(without doll) #912
Sparkling navy and
white stripe cotton
play-dress.
Contrasting ribbons
accent the Empire
line. White summer
shoes. \$ 1.00.

#912





SWEATER GIRL

(without doll) #976
 Sleeveless turtleneck sweater with matching cardigan. Tailored wrap-around flannel skirt. Knitting needles, yarns, scissors in a bowl, and Barbie's own knitting book. Open-toe pumps. The set, \$ 3.00.

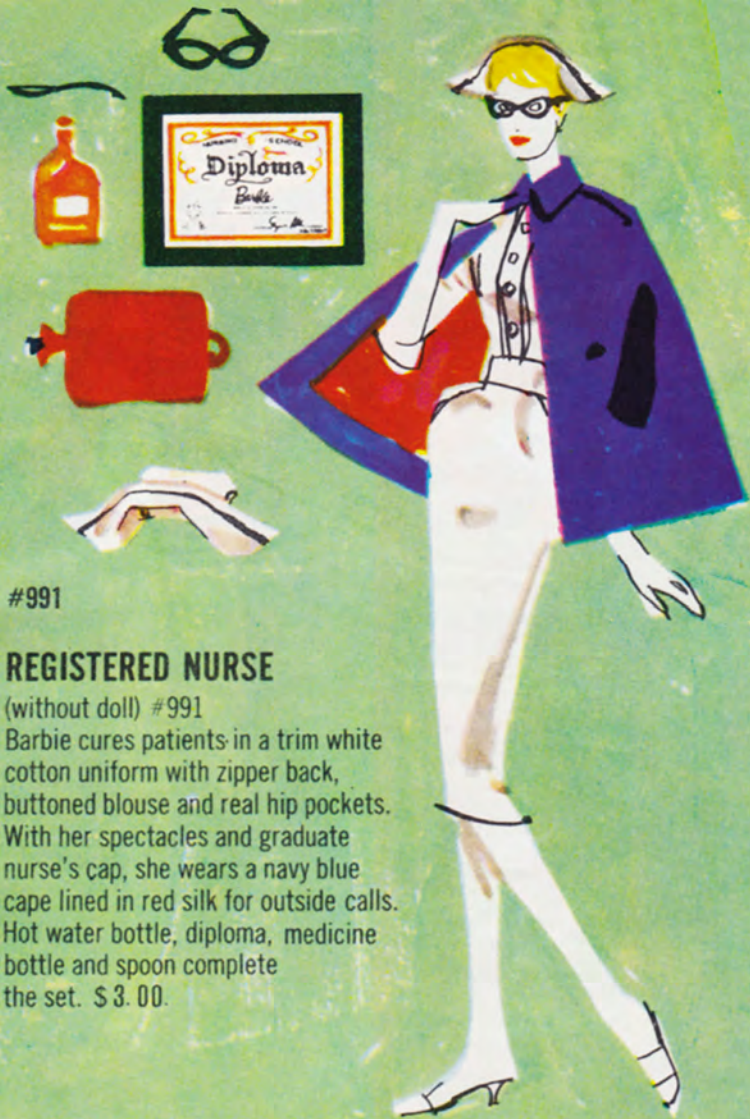
#976



SUBURBAN SHOPPER

(without doll) #969
 Novelty cotton-and-lace suntop dress has zipper back. Cute cartwheel strawhat, and fruit-filled tote bag. Necklace, pumps. Telephone, too!
 The set, \$ 2.50.

#969



#991

REGISTERED NURSE

(without doll) #991

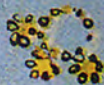
Barbie cures patients in a trim white cotton uniform with zipper back, buttoned blouse and real hip pockets. With her spectacles and graduate nurse's cap, she wears a navy blue cape lined in red silk for outside calls. Hot water bottle, diploma, medicine bottle and spoon complete the set. \$ 3. 00.

WINTER HOLIDAY

(without doll) #975
Swaggering car-coat of white "leather" over a striped jersey T-shirt with jaunty hood. Both shirt and jersey leotard pants have zipper closings. Plaid zipper bag, wedge shoes, warm mittens. The set, \$ 3.50.



#975



#963

RESORT SET

(without doll) #963
Middy collar sailcloth jacket has nautical braid trim; two patch pockets. Boat-neckline cotton t-shirt and neat sailcloth shorts with matching open-crown sunhat. Charm bracelet; wedge sandals. The set, \$ 2.50





PICNIC SET

(without doll) #967 — Checked gingham shirt with blue zipper fly. Wedge shoes and amusing straw hat. Picnic basket to carry the fish Barbie caught with her pole!
Complete set, \$2.50.

#967

CRUISE STRIPE DRESS

(without doll) #918 — right: Camisole top of novelty rib cotton stripe; sheath skirt of faille. Plastic patent belt. Back skirt zipper. Open-toe pumps. \$1.25.



#918

EVENING SPLENDOUR

(without doll) #961—The glamour coat is golden metallic brocade with fur cuffs; completely satin-lined. A strapless sheath of the same exciting brocade has zipper back closing. Velvet bag, slippers, and short white gloves, pearl necklace and earrings. The ensemble, \$ 4.00.

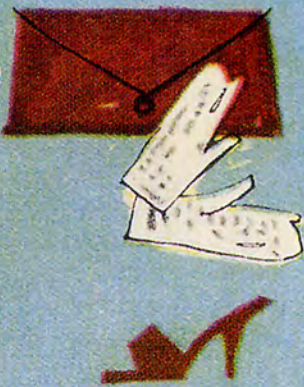
GOLDEN GIRL

(without doll) #911
Sheath dress with slippers, white gloves, velvet purse, pearl necklace and bracelet only. Set, \$ 2.00.



#911

#961



#915

"PEACHY-FLEECY" COAT

(without doll) #915
All-seasons town and travel coat of fine fleece. Carefully tailored and satin lined; softly curved patch pockets; half-belt with tiny brass buckle. Felt hat has perky feather. White "leather" gloves and "pigskin" bag. The set, \$ 2.50.

LET'S DANCE

(without doll) #978

Feminine blue-and-white
cotton flower print,
full skirted dress with wide
cummerbund and sash.
Accessorized by single strand
simulated pearl necklace,
black plastic shoes,
and white purse.
The set, \$ 2.00.

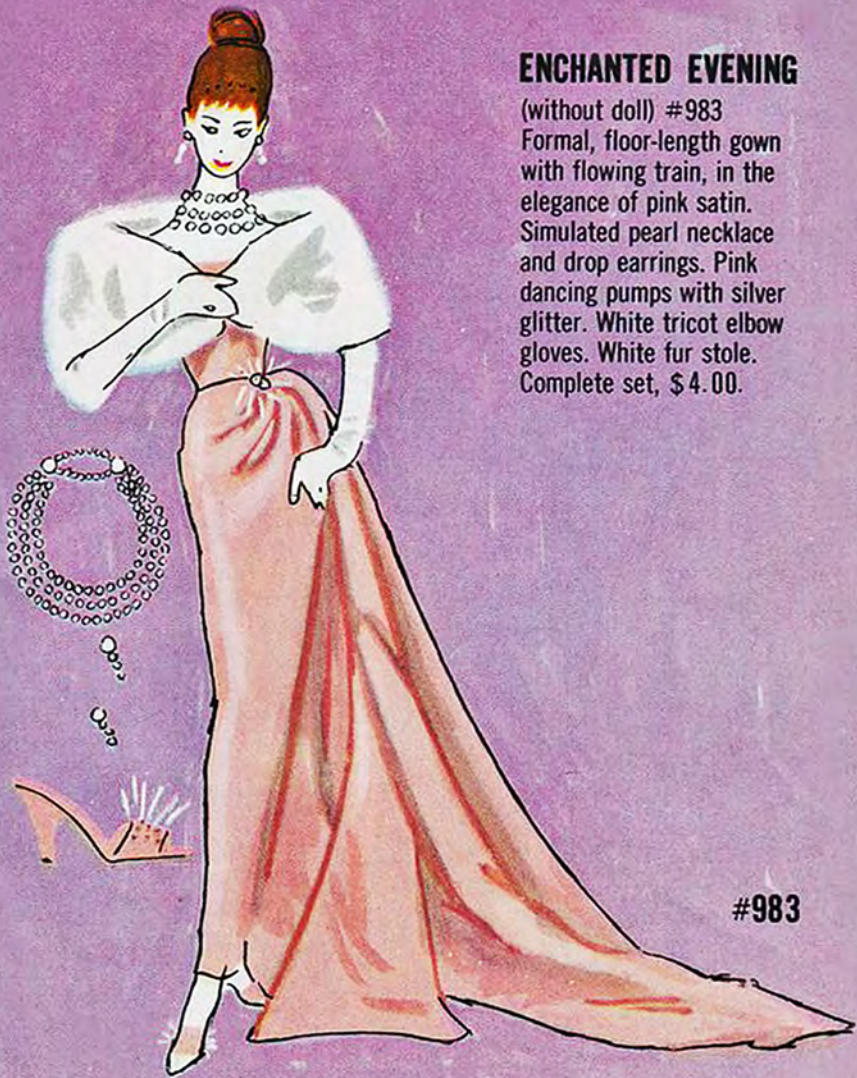


ENCHANTED EVENING

(without doll) #983

Formal, floor-length gown with flowing train, in the elegance of pink satin.

Simulated pearl necklace and drop earrings. Pink dancing pumps with silver glitter. White tricot elbow gloves. White fur stole. Complete set, \$4.00.



#983

SILKEN FLAME

(without doll) #977
Strapless, low back dress
has red velveteen top
and bouffant white satin
skirt. Wide golden belt,
matching purse. Black plastic
shoes. Complete set, \$1.50



#977



#989

BALLERINA

(without doll) #989

Barbie dances before kings and queens as the Sugar Plum Fairy, costumed in a shimmering silver tutu. A program announces her performance. For practice at the barre, she wears a black jersey leotard and tights. Pink satin shoe bag holds her ballet slippers. The set, \$3.00



#984

AMERICAN AIRLINES STEWARDESS

(without doll) #984

Barbie takes off for sky adventures in her flight blue uniform with flight insignia on cap and jacket. Her white nylon blouse and shoulder pocketbook are trimly tailored to regulations. An American Airlines flight bag travels with her. The set, \$3.50.



#986

SHEATH SENSATION

(without doll)

#986—Fashion's

slim sheath in fireman red cotton has 4 gold buttons and 2 deep pockets. Crisp white straw hat, gloves and white shoes make dazzling accessories.

The set, \$1.50.

"PLANTATION BELLE" DRESS SET

(without doll) #966—Waltz length garden party dress. Three tiers of lace on circle skirt of dotted nylon sheer. Zipper closing. Lacy picture hat, short white gloves, jewelled straw bag, pink pearl necklace, earrings, bracelet. Slippers. The set, \$4.00.



#966

SOLO IN THE SPOTLIGHT

(without doll) #982
Dramatic black glitter-gown with bare shoulders and rose corsage on nylon net flounce. Long black nylon tricot gloves. Pink scarf and bead necklace. Black plastic pumps. Plastic microphone. The set, \$3.00.





#987

ORANGE BLOSSOM

(without doll) #987

Barbie blossoms out for a wedding or graduation party in a buttercup yellow sheath frosted with an embroidered sheer nylon overskirt.

Veiled tulle hat, white shoes and a bouquet of spring posies complete the pretty picture.

The set, \$2.50.

#972



BARBIE "WEDDING DAY" SET

(without doll) #972

Magnificent church wedding gown with formal train, fashioned for a fairy princess. Tiny mock pearl tiara holds the tiered bridal veil. White satin gown under billowing layers of flowered nylon tulle. Short white nylon gloves, sentimental blue garter, bridal bouquet and white slippers.

The set, \$ 5.00.





© 1961 by Mattel Inc.

the *Barbie*[®] game
QUEEN OF THE PROM

Be sure to play this exciting game
of teen-age girl activities!

Available Now — \$4.00

AND NOW . . .

PRESENTING

Ken ^{T.M.}
HE'S A DOLL!

BARBIE'S BOYFRIEND

Ken is the ideal boyfriend for Barbie,
the Teen-Age Fashion Model.

A complete wardrobe of exclusively-tailored
men's clothes is available for Ken...
plus the "right" accessories in the
latest men's style... sports, business,
semi-formal and formal wear.

BASIC KEN DOLL

750

Tall, crew-cut Ken makes a handsome steady with your Barbie doll. Sturdy flesh-tone vinyl plastic with movable arms, legs and head make it easy and fun to dress Ken in his smartly tailored wardrobe. Ken doll, in bathing trunks and sandals plus towel, ken stands upright on special pedestal, in cluded. \$3.50

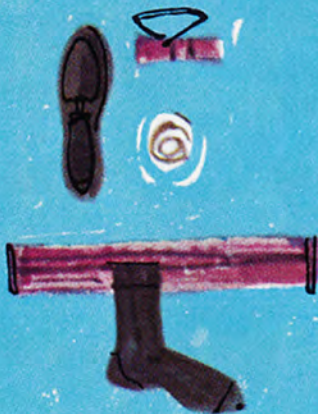
#750



TUXEDO

(without doll) # 787

Ken is set for an Enchanted Evening in his tuxedo with satin-faced lapels, white dress shirt, black socks and shoes. He wears a dashing maroon bow tie and cummerbund, carries a dewy white corsage for Barbie to pin on her gown. The set, \$ 5.00



#787



SPORT SHORTS

(without doll) #783

Ken's been invited to Barbie's backyard barbecue. He's ready for a big helping of fun in a sport shirt and contrasting Bermuda shorts. His khaki socks and brown oxfords round off a really neat casual wardrobe.

The set. \$2.00.

#783

CAMPUS HERO

(without doll) #770

Campus leader Ken proudly wears the handsome sweater Barbie knit for him adds white duck pants, red socks and white oxfords. Taking Barbie to the big pre-game rally and dance, he shows his University letter, leads the crowd's cheers with his banner

The set. \$3.00

#770



DREAMBOAT

(without doll) # 785

Ken chooses Ivy colors for a Sunday drive in the country with Barbie. His sports jacket, open-collared shirt and tailored slacks are perfect for a lunch-stop in a pretty village. Matching socks, black oxfords and a snap-brim straw hat add to Ken's good looks. The set, \$4.00

785



CASUALS

(without doll) # 782

When Ken takes the keys to his sports car, Barbie is navigator on the Open Road. Behind the wheel he wears a red sports cap, knit tee shirt and polished cotton pants. Barbie selected the argyle socks he wears with two-tone shoes. The set, \$2.00.

#782

SATURDAY DATE

(without doll) # 786

For business appointments in town, or Saturday night dress-dates with Barbie, Ken chooses smart natural-shoulder suit and long-sleeved white shirt. Fashionable slim tie in Ivy stripes shoes and socks complete the outfit. The set, \$4.00



#786



TERRY TOGS

(without doll) # 784

A shower and shave start the morning right, and Ken is dressed for comfort in a thick, thirsty terry robe embroidered "K," with matching terry sluffs. He has soap, sponge and a man-size terry towel at hand. Dressed in knit briefs, he uses his electric shaver and comb. The set, \$2.00

#784



SLEEPER SET

(without doll) # 781

A sugar bun and glass of milk satisfy a sudden appetite before bedtime. Last task of the day : setting the big alarm clock. Ken sleeps in tailored striped pajamas with solid trim. The set, \$1.50

#781



IN TRAINING

(without doll) # 780

Ken shows how he earned his team letter! He works out daily in a knit tee shirt and briefs or elastic waist boxer shorts. His exercise manual and dumbbell set help him keep in trim. The set, \$1.25

= 780

DON'T ACCEPT SUBSTITUTES!

Look for the special
identifying wrist tag attached to each
genuine Barbie and Ken Doll.



For perfect fit and
finest quality, always insist
on the genuine BARBIE
costume sets or KEN wardrobe sets,
made only by Mattel.

You can tell it's Mattel... it's swell!

Send for your free

BARBIE TEEN-AGE FASHION MODEL
NEWSLETTER!



You'll receive all the advance news of new Barbie Doll fashions which you'll want to add to your collection. To get your free copies of this fashion report, send your name and address to:

Barbie Teen-Age Fashion Model

MATTEL, INC.

5150 Rosecrans Ave., Hawthorne, Calif.

PRINTED IN JAPAN